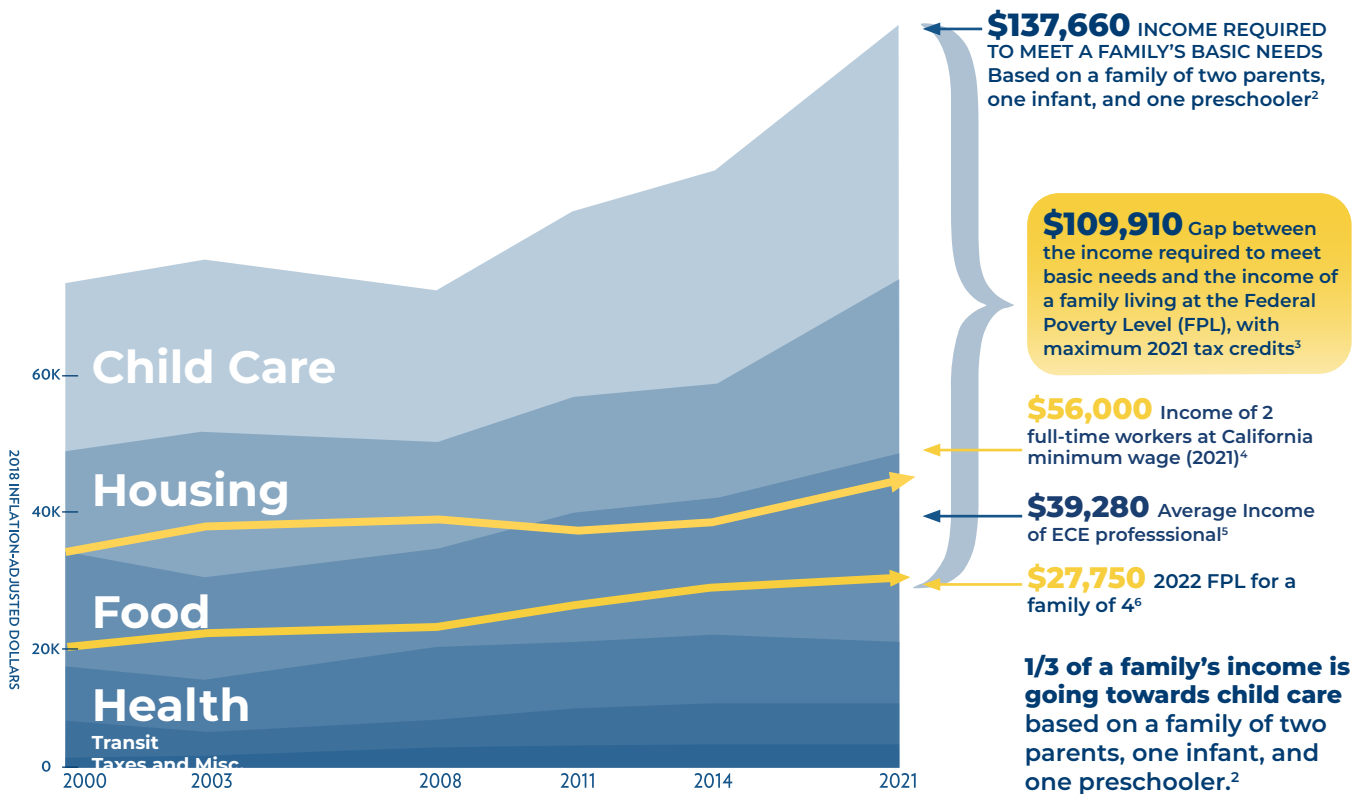




Child & Family Data for Action: City of Oakland

FINANCIAL REALITIES FOR FAMILIES IN ALAMEDA COUNTY¹



STRUCTURAL INEQUITIES LEAD TO RACIAL DISPARITIES

Maternal & Newborn Health



Black women and birthing people are 3x more likely to die during pregnancy or childbirth and to experience more maternal health complications.⁷



Black babies are 3-4x more likely to be born too early, too small, or to die before their first birthday.⁷



Black women and families are 2x more likely to live in or experience poverty during pregnancy.⁷



1 in 3 families struggled to afford diapers prior to the pandemic.¹⁰

OAKLAND FAMILY DEMOGRAPHICS

Total Population in 2021: 433,797¹

4,305

children under 5 living under poverty, 16.5% of the 26,099 children under 5¹¹

14,773

children birth to 2, 27.7% of the 52,177 Alameda County children aged birth to 2³

16,605

children 3 to 5, 27.4% of the 56,590 Alameda County children 3 to 5³

Families Accessing Public Benefits in Oakland

These are estimates due to the change in district boundaries and using zip code approximation.

12,830

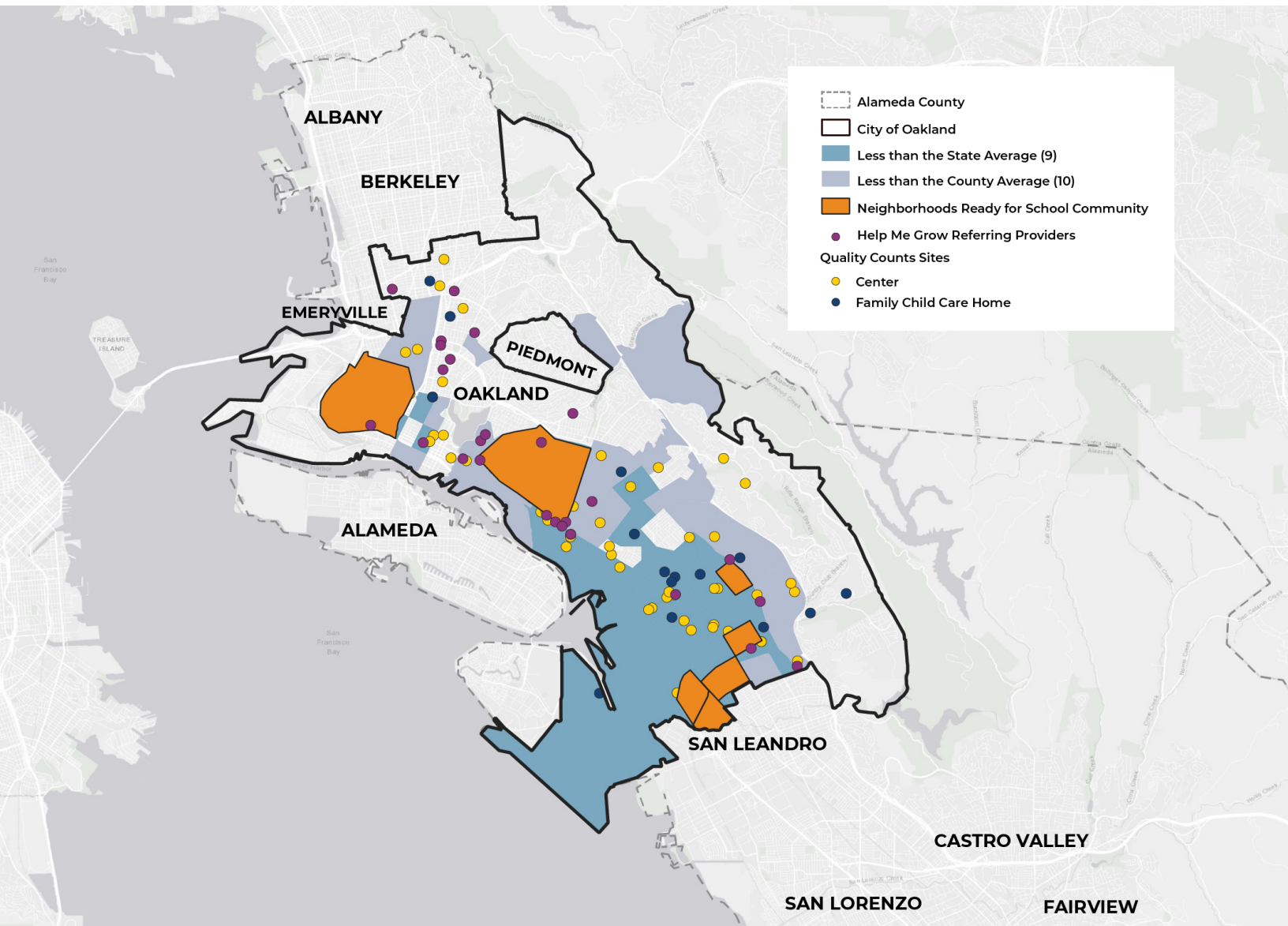
of the 0-6 population, about 46%, receiving Medi-Cal

5,878

of 0-6 population, about 21%, receiving CalFresh

Link Between Child Well-Being & Community Conditions: Strong Start Index Map 2020¹⁷

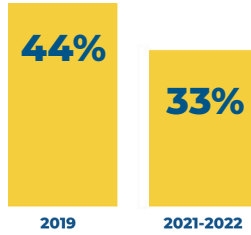
Research has found correlations between the prevalence in the number of community assets, e.g. family, health, service, and financial assets, to school readiness and life-long well-being. Alameda County has 10 Strong Start Index assets out of a possible 12, which exceeds the state average for 9 assets. The City of Oakland has an average of 9.4 assets.



ALAMEDA COUNTY KINDERGARTEN READINESS

Kindergarten Readiness in 2021-2022¹⁸

According to parents/caregivers, 33% of children were fully ready for kindergarten compared to 44% in 2019. **Structural inequities compounded by the COVID-19 pandemic have impacted children, families, and communities.**

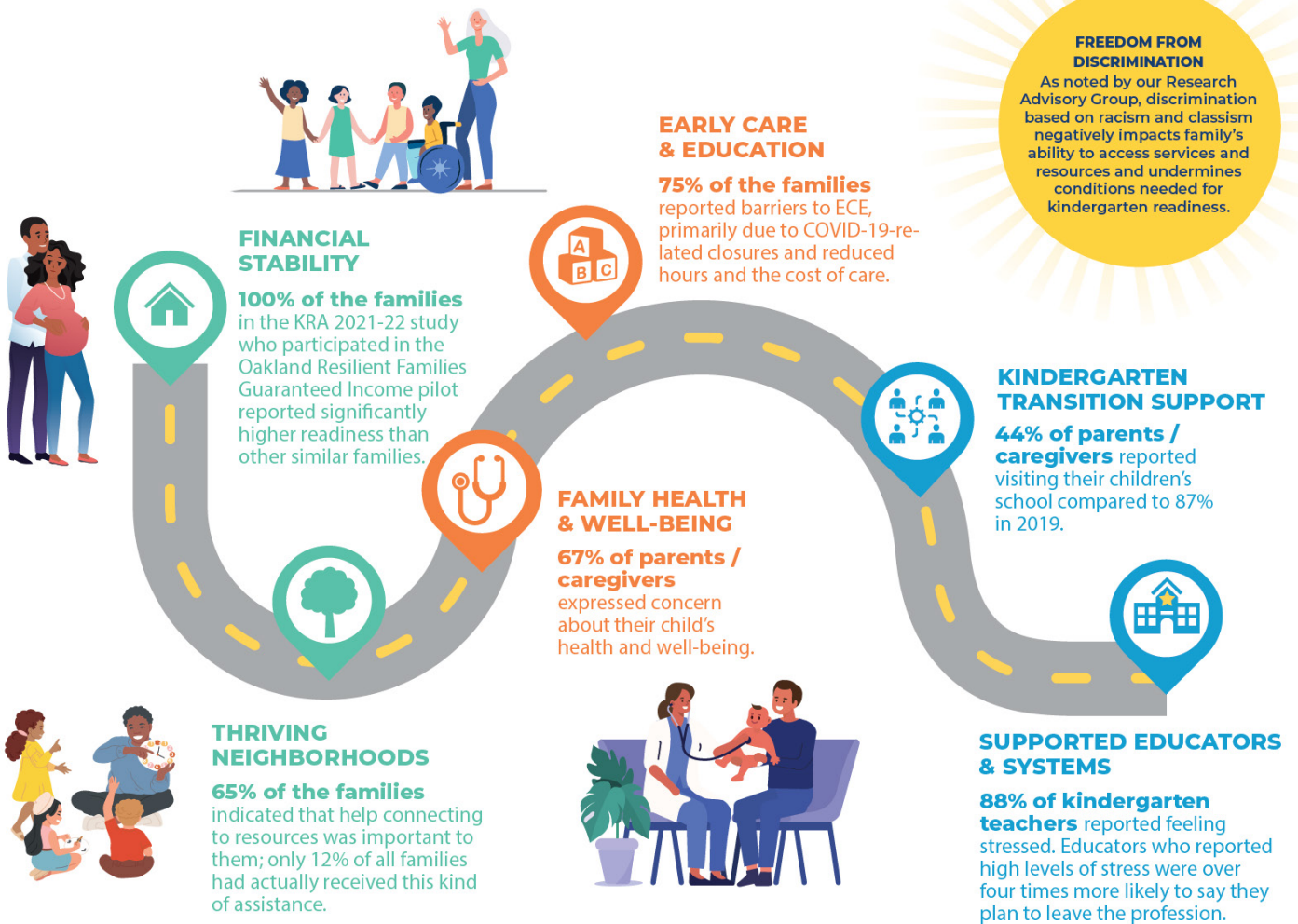


Achievement gaps persist for children who are not ready for kindergarten.

4 in 5

children who are not ready for kindergarten continue to struggle academically in third grade (2018)¹⁹.

Road to Kindergarten Readiness



Community, Family, and School conditions affecting kindergarten readiness were determined through analysis of 3,000+ surveys and the input of a 30-member Research Advisory Group comprising parents/caregivers, early care and education professionals, transitional/kindergarten teachers, and community leaders. Learn more about the study sample and methodology in Appendix D of the 2021 Kindergarten Readiness Assessment.

City of Oakland: KRA Community Engagement

2,015

Parents/Caregivers countywide including 465 in Oakland, 23% of the total number of KRA participants

284

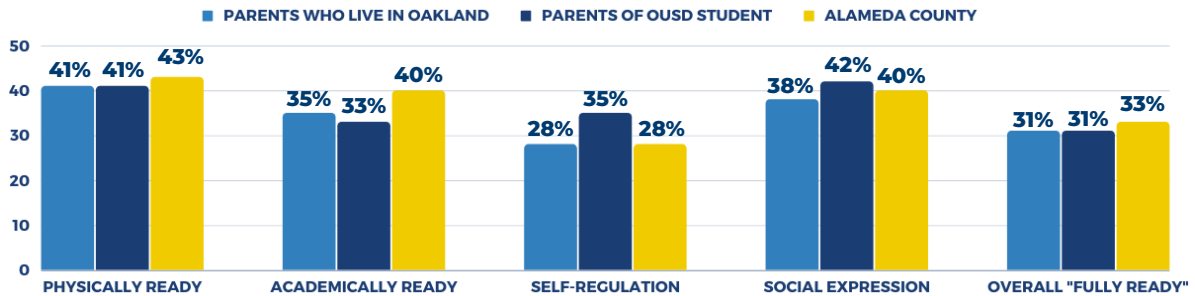
Kindergarten and/or Transitional Kindergarten teachers countywide including 64 who teach in Oakland, 22.5% of the total number of KRA participants

695

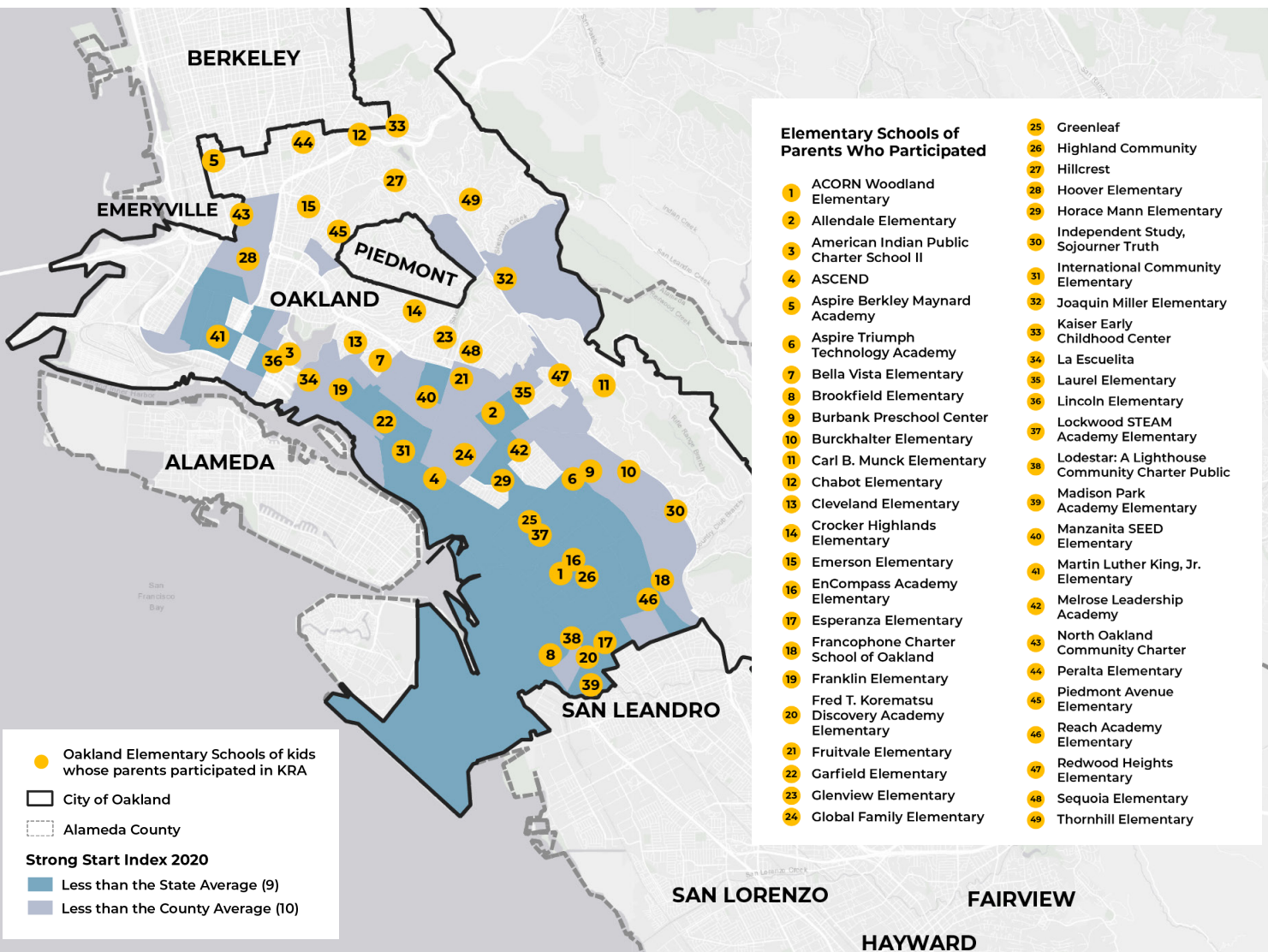
Early Care & Education professionals countywide including 149 who teach in Oakland, 21% of the total number of KRA participants

City of Oakland: Kindergarten Readiness in 2021-22

Parent/Caregivers' Assessment of Their Child's Readiness by Domain



City of Oakland: KRA Participating Schools



EARLY CARE & EDUCATION (ECE) IN OAKLAND

Unmet Need for Subsidized Child Care

335

licensed child care programs in Oakland, including 136 licensed centers and 199 Family Child Care (FCC) sites.³

Access to Child Care²⁰

Preschool & infant toddler unmet need for subsidized care:

8,041

of the 8,064 eligible infants and toddlers are not enrolled in subsidized care. The unmet need for infant/toddler care is 90.9%³

3,177

of the 6,418 eligible preschoolers are not enrolled in subsidized care. The unmet need for subsidized preschool care is 51.4%³

Change in the net number of centers & family child care (FCCs) between 2019 & 2021.²⁰

-8

decrease in centers

-86

decrease in licensed FCCs

2022 Facilities Needs Assessment²¹

69

of sites First 5 Alameda spoke to about facilities issues (13 centers, 56 licensed FCCs)

44%

of sites reported they would expand if resources were available

26%

of sites reported 6+ conditions as an inadequate or substandard condition

Child Care Providers²¹

119

sites enrolled in the Quality Counts program (66 centers, 15 licensed FCCs, 38 family, friends & neighbor providers)

2,163

children under the age of 5 served at these sites

426

ECE professionals work at these sites

FIRST 5 PROGRAMS IN OAKLAND FY 2021-2022

Help Me Grow in Oakland²²

2,513

children & their families were served in the district, providing them with care coordination, developmental screening, health & parenting education, resource information, family navigation, & peer support.

2,354

child-serving agencies in the district were provided with support regarding care access, developmental screening, and/or assistance in navigating children to services.

71

referrals received to assist children & families from the district.

Alameda County: Training at F5 (Online & In-Person)

46

training events hosted

1,005

people attended at least one training

550

agencies/organizations participated

Fatherhood Supports

51

providers who serve father figures from Oakland attended a Father's Corp training

5

partnering agencies facilitated groups for 120 Oakland father figures and/or providers

Quality Counts: Assessment & Supports

2,163

training events hosted

426

people attended at least one training

374

agencies/organizations participated

FIRST 5 ALAMEDA COUNTY PROGRAMMATIC INVESTMENTS

\$4+ MILLION INVESTED IN FY23 IN OAKLAND



FINANCIAL STABILITY

Lotus Bloom

\$50,000 in FY 2021-2022; \$50,000 in FY 2022-2023

Funding to distribute basic needs services to families with children 0-5 in Alameda County through the Oakland Family Resource Center Network.

SupplyBank.org

\$51,811 in FY 2021-2022; \$460,000 in FY 2022-2023

Funding to provide Kindergarten Readiness backpacks. Funding to provide diaper kits to organizations serving high need families with young children in Alameda County (FY 2022-2023 only).



THRIVING NEIGHBORHOODS

Mandela Family Resource Center (Lincoln Families)

\$423,000 in FY 2021-2022; \$423,000 in FY 2022-2023

Funding to build infrastructure in neighborhoods to provide places for families to learn, plan, and achieve their goals; increase neighborhood-level coordination to provide a comprehensive menu of resources to support family protective factors, build community, and increase children's school readiness; and increase family leadership and civic engagement opportunities.

San Antonio Family Resource Center (ALL IN Alameda County, Lotus Bloom, Trybe)

\$423,000 in FY 2021-2022; \$426,000 in FY 2022-2023

Funding to build infrastructure in neighborhoods to provide places for families to learn, plan, and achieve their goals; increase neighborhood-level coordination to provide a comprehensive menu of resources to support family protective factors, build community, and increase children's school readiness; and increase family leadership and civic engagement opportunities. In FY 2022-23 only, an additional \$3,000 in funding supported language access services formerly covered through First 5's in-house Cultural Access Services (CAS).

Roots Community Health Center (Roots)

\$423,000 in FY 2021-2022; \$423,000 in FY 2022-2023

Funding to build infrastructure in neighborhoods to provide places for families to learn, plan, and achieve their goals; increase neighborhood-level coordination to provide a comprehensive menu of resources to support family protective factors, build community, and increase children's school readiness; and increase family leadership and civic engagement opportunities.

Room to Bloom Family Resource Center (Lotus Bloom)

\$293,000 in FY 2021-2022; \$296,000 in FY 2022-2023

Funding to coordinate and implement programs and services at the Castlemont Community Room to Bloom Family Resource Center and conduct neighborhood outreach and family engagement activities and coordinate the Oakland Family Resource Center Network.



FAMILY HEALTH & WELL-BEING

Alameda County Public Health Department

\$95,000 in FY 2021-2022; \$95,000 in FY 2022-2023

Funding to provide training, technical assistance, and consultation support to Child Health and Disability Prevention (CHDP) and other pediatric practices serving families with the most need in Alameda County on early identification for children birth-5 years of age with health and developmental needs.

Family Resource Navigators

\$482,000 in FY 2021-2022; \$482,000 in FY 2022-2023

Funding to provide Help Me Grow Family Navigation services, support coordination and administration of Help Me Grow family leadership activities and help meet the essential needs of vulnerable families.

Alameda Health System - Highland Hospital

\$156,028 in FY 2021-2022; \$136,800 in FY 2022-2023

Funding to continue implementation of the DULCE model, including the support and guidance of the Clinic Champion Pediatrician at Highland Hospital's Pediatric Department.

Funding to implement, sustain, and evaluate a pediatric quality improvement project that builds pediatric primary care capacity to conduct universal developmental and/or trauma screenings and to connect families to relevant resources (FY 2021-2022 only).

Community Clinics

Funding to implement, sustain, and evaluate a pediatric quality improvement project that builds pediatric primary care capacity to conduct universal developmental and/or trauma screening and to connect families to relevant resources.

- La Clínica de La Raza - \$14,400 in FY 2021-2022 (3 sites)
- Native American Health Center - \$4,800 in FY 2021 - 202

Lao Family Community Development, Inc

\$10,000 in FY 2021-2022

Funding to provide supports for Afghan refugee families.

Supporting Fathers Through Fatherhood Partnership Grants

Funding to enhance capacity for increasing engagement and support of fathers/father figures by hosting father-specific parenting education and support groups, providing staff training and professional development, and integrating activities with First 5 Alameda County and other family service programs.

The following groups received \$10,000 in FY 2021-2022; \$15,000 in FY 2022-2023:

- Friends of the Oakland Public Library
- Positive Communication Practices
- Blkmpwr, LLC partnered with Dads Evoking Change
- Oakland Public Library, 81st Avenue Library Branch
- Family Paths
- Realized Potential Incorporated (RPI)



EARLY CARE & EDUCATION

BANANAS, Hively, and Community Child Care Council (4Cs) of Alameda County

Overall funding for three agencies: \$240,000 in FY 2021-2022; \$240,000 in FY 2022-2023

Funding to provide training and playgroups for Family, Friend, and Neighbor (FFN) caregivers and Family Child Care (FCC) providers.

Overall funding for three agencies: \$641,00 in FY 2021-2022; \$630,000 in FY 2022-2023

Funding to provide professional development opportunities for the Early Childhood Education (ECE) workforce in Alameda County and on-site technical assistance and coaching to Quality Counts sites.

Jewish Family & Community Services East Bay

\$110,000 in FY 2021-2022

Funding to provide Center for Social Emotional Foundations for Early Learning (CSEFEL) training and coaching to identified Quality, Rating, and Improvement Systems (QRIS) Early Childhood Education sites in Alameda County, mentoring to Alameda County CSEFEL authorized trainers and coaches, and overall administrative oversight for CSEFEL implementation.

Oakland Public Library

\$23,600 in FY 2021-2022; \$24,860 in FY 2022-2023

Funding to provide Quality Counts Pathway resources for Family, Friend and Neighbor (FFN) caregivers by leveraging Oakland Public Library’s current Storytimes and to support multilingual programming and materials through Día de los Libros/Día de los Niños (Día) events.

YMCA of the East Bay

\$502,800 in FY 2021-2022; \$538,000 in FY 2022-2023

Funding to train CalWORKs participants to become certified and employed as early childhood professionals.

California School-Age Consortium (CalSAC) (AB212)

\$582,000 in FY 2021-2022; \$684,765 in FY 2022-2023

Funding to manage the Quality Counts’ process for distributing Quality Improvement grant incentives and professional development stipends and Dual Language Learner (DLL) stipends. Funds support facility and environment improvements, enhance training and staff release time, support technology needs, and support professional development activities.

BANANAS

\$100,000 in FY 2021-2022; \$100,000 in FY 2022-2023

The BANANAS CARE Program provides child care navigation and support to families who are experiencing homelessness.



KINDERGARTEN TRANSITION SUPPORT

Oakland Unified School District - Summer Kinder/TK Bridge Program

\$227,000 in FY 2022-23

Funding to support Summer Pre-K (SPK) programs and provide Early Childhood Education (ECE) and K-12 teachers with professional development and orientation to the SPK model. Funding also supports a Kindergarten Readiness Director to develop and implement year-round school readiness and transition programming including a student passport/snapshot form, and a variety of family/child learning activities.

CITATIONS

1. Insight Center (2021). California Family Needs Calculator (formerly the California Family Economic Self-Sufficiency Standard or Self-Sufficiency Standard), Alameda County. Retrieved from <https://insightccd.org/family-needs-calculator/>
2. Insight Center (2021). Family Needs Indicator - Alameda County Fact Sheet. Retrieved from: <https://insightccd.org/the-cost-of-being-californian-alameda-county-fact-sheet/>
3. Analysis by First 5 Alameda County calculating the difference between Income Required to Meet Basic Needs [see citation 5] – 2022 FPL level for family of 4.
4. California Department of Developmental Services. (2021). Minimum Wage – 2021. Based on two workers working 40 hours per week, 50 weeks per year. Retrieved from <https://www.dds.ca.gov/rc/vendor-provider/minimum-wage/>
5. California Early Care and Education (ECE) Workforce Registry. (October 2020). Note: Self-reported data for 2,348 people registered in the Alameda County Workforce Registry as of October 2020. The Workforce Registry only represents a subset of the ECE workforce as it is a voluntary database. The registry includes an overrepresentation of those working at child care centers and Title 5 programs compared to other child care program types. Registry participants report wages as an hourly gross rate or annual, monthly, or weekly gross salary. Annual wage was calculated by multiplying their self-reported wage and their self-reported number of hours worked by 50 weeks.
6. US Department of Health & Human Services (HHS). (2022). HHS Poverty Guidelines for 2022. Based on a household of four. Retrieved from <https://aspe.hhs.gov/poverty-guidelines>
7. Alameda County Public Health Department. (n.d), Perinatal Equity Initiative webpage. Retrieved from <https://acphd.org/programs-and-services/perinatal-equity-initiative/>
8. Alameda County Public Health Department. (n.d), Perinatal Equity Initiative webpage. Retrieved from <https://acphd.org/programs-and-services/perinatal-equity-initiative/>
9. Alameda County Public Health Department. (n.d), Perinatal Equity Initiative webpage. Retrieved from <https://acphd.org/programs-and-services/perinatal-equity-initiative/>
10. National Diaper Bank Network. (2021) Diaper Need and Its Impact On U.S. Families. Retrieved from <https://nationaldiaperbanknetwork.org/wp-content/uploads/2019/02/Diaper-Need-and-Its-Impact-on-US-Families.pdf>
11. U.S. Census Bureau (2021). Sex by Age American Community Survey 5-year estimates (B01001).
12. California Department of Public Health, Birth Statistical Master Files. (2020). Retrieved from <https://strongstartindex.org>
13. U.S. Census Bureau (2021). Sex by Age. American Community Survey 5-year estimates (B01001).
14. U.S. Census Bureau (2021). Poverty Status in the past 12 months of families. American Community Survey 5-year estimates (S1702).
15. Alameda County Social Services Agency (2021). Data provided at zip code level. Estimations of client counts using proportion of zip code within supervisor district or city limit
16. Alameda County Social Services Agency (2021). Data provided at zip code level. Estimations of client counts using proportion of zip code within supervisor district or city limit
17. "California Strong Start Index." California Strong Start Index. First 5 Center for Child Policy, Accessed July 28, 2023. <https://strongstartindex.org/>.
18. 2022. 2021-2022 Kindergarten Readiness in Alameda County. Applied Survey Research. [http://www.first5alameda.org/files/2021-22 Alameda KRA Report_ FINAL.pdf](http://www.first5alameda.org/files/2021-22%20Alameda%20KRA%20Report_FINAL.pdf)
19. Applied Survey Research. (2018). Kindergarten Readiness and Later Achievement, A Longitudinal Study in Alameda County. Retrieved from <http://www.first5alameda.org/files/Alameda%20Longitudinal%20KRA%20Study%20Final.pdf>
20. 2021. Alameda County Early Care and Education Needs Assessment. First 5 Alameda County. [http://www.first5alameda.org/files/2021 Alameda County ECE Needs Assessment FINAL.pdf](http://www.first5alameda.org/files/2021%20Alameda%20County%20ECE%20Needs%20Assessment%20FINAL.pdf)
21. 2021. Alameda County Early Care and Education Licensed Facilities Assessment. First 5 Alameda County. [http://www.first5alameda.org/files/Facilities Needs Assessment 2022 V2.pdf](http://www.first5alameda.org/files/Facilities%20Needs%20Assessment%202022%20V2.pdf)
22. First 5 Alameda County Contractor/Program Reporting for fy 2021 - 2022