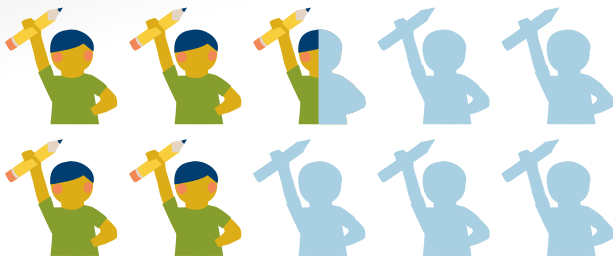


First 5 Alameda County (First 5) supports an integrated early childhood system to ensure all children arrive at school ready to learn and are free from abuse and neglect. Every two years, First 5 partners with Applied Survey Research to assess kindergarten readiness in the County.

Improving kindergarten readiness countywide requires cooperation from all sectors serving children and families. We seek to strengthen existing partnerships and forge new ones with public, private and nonprofit sector entities, especially those that do not currently see early childhood as a core part of their mission.

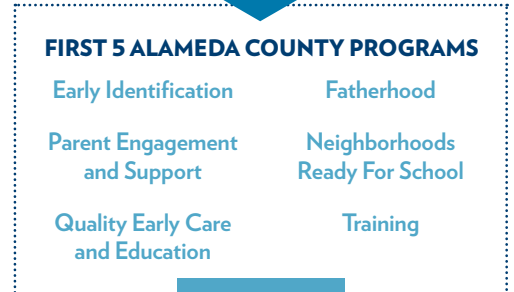
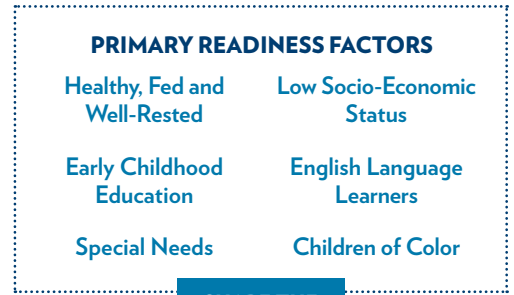
Only 44% of Alameda County Children were **FULLY READY** for KINDERGARTEN in 2017



Call to Action:

- 1 Preserve, sustain, and scale proven and successful First 5 programs.
- 2 Increase utilization of the social safety net by eligible families with young children.
- 3 Develop leadership pathways for families with young children enabling them to advocate for their priorities.

KINDERGARTEN READINESS REQUIRES A COLLABORATIVE EFFORT

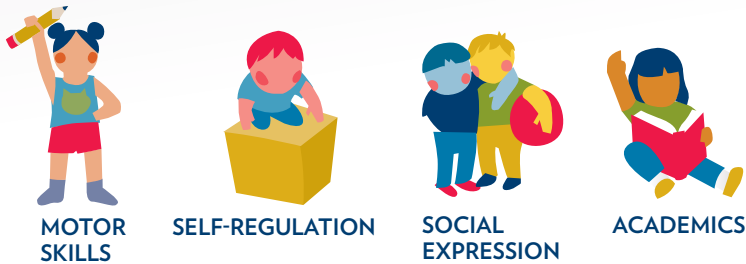


What is Kindergarten Readiness?

KINDERGARTEN READINESS IS A MEASURE OF HOW PREPARED A CHILD IS TO SUCCEED IN SCHOOL PHYSICALLY, COGNITIVELY, SOCIALLY AND EMOTIONALLY.



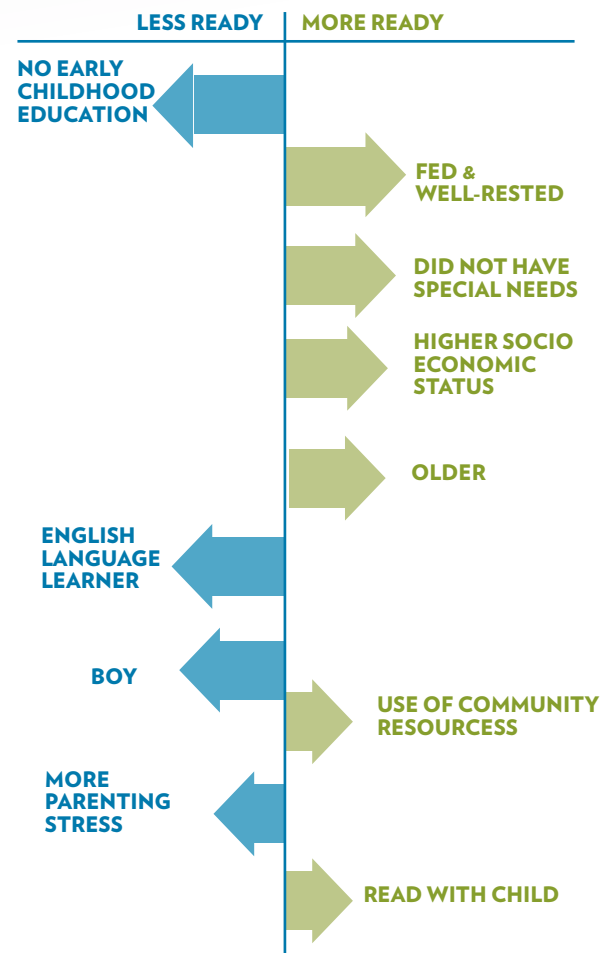
In 2017, 1,444 students in 89 kindergarten classrooms throughout Alameda County were assessed across four domains of readiness:



The kindergarten readiness assessment identifies factors that predict a child’s readiness for school. In addition to addressing the barriers facing low-income families and English Language Learners, we need to ensure that children:

- **ARRIVE AT SCHOOL HEALTHY, FED AND WELL-RESTED**
- **EXPERIENCE QUALITY EARLY CARE AND EDUCATION PROGRAMS**
- **ARE SCREENED FOR DEVELOPMENTAL DELAYS AND HAVE ACCESS TO EARLY INTERVENTION WHEN APPROPRIATE**

KINDERGARTEN READINESS PREDICTIVE FACTORS (IN ORDER OF IMPACT)



Opportunities and Partnerships to Turn the Curve on Kindergarten Readiness



Improve Child Health and Well-Being

Children who come to school tired, sick, or hungry are less ready for school. First 5 addresses child health and well-being by funding home visiting programs, connecting parents to supports that address their basic needs (e.g. through Perinatal Health Outreach Coordinators), and providing leadership pathways for parents.

Partnership Opportunities:

INCREASE ACCESS to health care services, including developmental screening as well as vision, dental, and asthma services.

ENSURE LONG TERM SUSTAINABILITY of programs promoting healthy development of infants and care coordination by growing parent support programs such as home visiting, Project DULCE, and Help Me Grow.

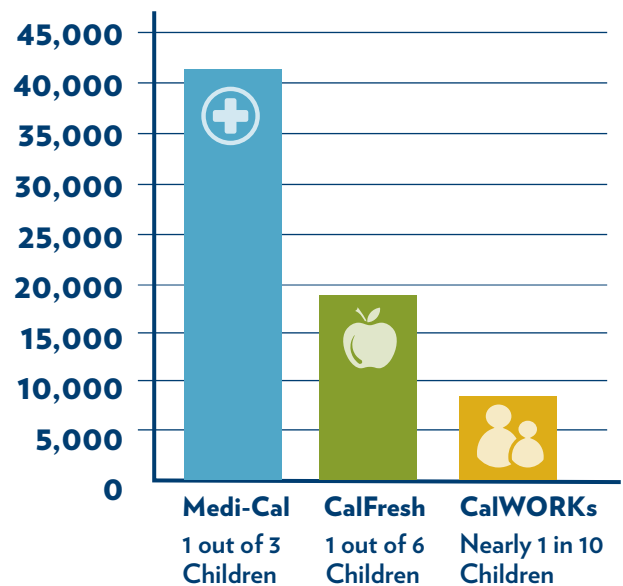
SUPPORT EFFORTS TO USE FOOD AS MEDICINE and enhance access to healthy foods.

REMOVE BARRIERS FOR ENROLLMENT in food assistance programs like WIC, CalWORKs, CalFresh, and the summer food program.

DEVELOP PARENT-INFORMED POLICIES and promote parent leadership opportunities that help young families become advocates on a local, state, and federal level.

Public Benefits Enrollment

NUMBER OF CHILDREN 0-6 RECEIVING BENEFITS IN ALAMEDA COUNTY JULY 2016
115,012 total



PARTNERS

Alameda County Community Food Bank, Alameda County Early Childhood Policy Committee (ACECPC), Alameda County Health Care Services Agency, Alameda County Social Services Agency, ALL IN Alameda County, Committee on Children With Special Needs, Health Care Providers, Philanthropy

Remove Barriers for Low Income Families and English Language Learners

Children from families with low socioeconomic status and/or who are English Language Learners are less ready for kindergarten. In FY17–18, First 5 began early childhood programming operated by neighborhood collaboratives in areas of the county with the highest need.

Partnership Opportunities:

IMPROVE SERVICES by making them more culturally and linguistically appropriate and provide better service coordination for families with young children in targeted neighborhoods.

SUPPORT EFFORTS TO SUSTAIN FUNDING for parent support programs such as playgroups, early childhood programs at parks and libraries, and Parent Cafes.



1/3 of children living in poverty in Alameda County are under five years old



44% of households in Alameda County speak a language other than English.

PARTNERS

Alameda County Health Care Services Agency, Alameda County Sheriff's Department, Alameda County Social Services Agency, Businesses and Business Leaders, Cities, Community Based Organizations, Philanthropy, School Districts

Address the Needs of Children of Color

First 5 is committed to racial equity and sees a role for all system players to help reduce the kindergarten readiness gap. Research demonstrates that readiness improves when children have access to early care and education programs.

Partnership Opportunities:

ADDRESS THE EFFECTS OF IMPLICIT BIAS AND INSTITUTIONAL RACISM on young children of color through staff professional development and program design.

ADOPT THE FATHER FRIENDLY PRINCIPLES to improve outreach and support fathers. Authorize staff to join the Alameda County Fathers Corps, the learning community for male service providers.

INCORPORATE EARLY CHILD DEVELOPMENT PRINCIPLES into programs that address the needs of boys and men of color.

ENGAGE IN PARENT PARTNERSHIP, LEADERSHIP, AND ENGAGEMENT by supporting programs that encourage authentic parent voice in decision making and program design.

Boys of color have improved readiness when they have access to:



Early Care and Education



Family Supports

PARTNERS

Alameda County Health Care Services Agency, Alameda County Men and Boys of Color Coalition, My Brother's Keeper, Youth Ventures Joint Powers Authority (JPA,) Oakland Starting Smart and Strong

Improve Access to Quality Early Care and Education Programs

Attending licensed early care and education (ECE) programs improves kindergarten readiness. First 5 provides coaching and professional development to ECE providers, supports Quality Counts, a statewide voluntary rating system for child care sites, and advocates to make ECE more affordable for parents.

Partnership Opportunities:

INCREASE ACCESS TO QUALITY ECE OPPORTUNITIES by providing more subsidized quality child care.

ENSURE LONG TERM SUSTAINABILITY of quality ECE programs and strengthen the qualifications, compensation, and stability of the early learning workforce.

SUSTAIN OR EXPAND NEIGHBORHOOD PROGRAMS by supporting services outside the traditional ECE setting, such as summer Pre-K as well as programs at libraries, parks, and recreation centers.

Number of Children 0-4 Eligible for Subsidized Childcare

21,151 DEMAND

9,592 SUPPLY **11,559** GAP

PARTNERS

Alameda County Early Care and Education Planning Council, Alameda County Office of Education, Business Leaders, Early Care and Education providers, Cities, School Districts, Employee Membership Organizations/Labor Unions, Oakland and Alameda County Workforce Investment Boards

Early Identification of Special Needs

While children with a diagnosed special need have lower kindergarten readiness scores, early identification and intervention can mitigate the challenges these students face. First 5 supports Help Me Grow which promotes early detection for developmental concerns/delays in children under 5, provides parents with child development information, and makes referrals to appropriate services. Eighty five percent (85%) of children served by Help Me Grow are enrolled in Medi-Cal making it a critical component of the safety net in Alameda County.



Partnership Opportunities:

STRENGTHEN THE COUNTY'S ABILITY to identify developmental concerns early and link families to community resources by supporting the sustainability, expansion, and integration of Help Me Grow (HMG) into existing systems of care.

ADVOCATE AT THE STATE LEVEL for better access to services for children with special needs. Provide a range of services for children with developmental needs who are not eligible for entitlement programs.

CHAMPION EARLY IDENTIFICATION strategies, including developmental screening, in programs and practices.

PARTNERS

Alameda County Department Public Health, Community Based Organizations, Early Care and Education Providers, Families, Health Care Providers, Regional Center, School Districts, WIC

Research confirms that a child's experience during the first five years of life is fundamental to their future success.