

I am pleased to present the FY 2015-16 Annual Report covering the third year of our 2013-17 Strategic Plan. First 5 Alameda County Commissioners, staff, and the Alameda County early childhood community have worked passionately and collaboratively to provide high quality services to young children and their families in our community and to move the policy agenda forward for long term sustainability. This report focuses on highlights in each of our 9 strategy areas, providing a glimpse into the broader work of our organization. For more information, I invite you to explore our website and all of our evaluation reports.



In partnership,
Janis Burger, CEO

FIRST 5 ALAMEDA COUNTY ANNUAL REPORT 2015 - 2016

Supporting Families,
Providers and Communities
So That Children Thrive



FY 2015-16 COMMISSIONERS

Pamela Simms-Mackey, MD, FAAP, Chair

Ricky Choi, MD, MPH, FAAP, Vice Chair

Renee Herzfeld, Vice Chair

Alex Briscoe

Wilma Chan

Lori Cox

Cecilia Echeverria

Tomás A. Magaña, MD, MA, FAAP

Deborah Stark



RESULT 1 STABLE, SUPPORTIVE & NURTURING ENVIRONMENTS FOR CHILDREN

The Strengthening Families Framework identifies 5 protective factors that decrease the likelihood of child abuse and neglect and promote children's readiness for school.

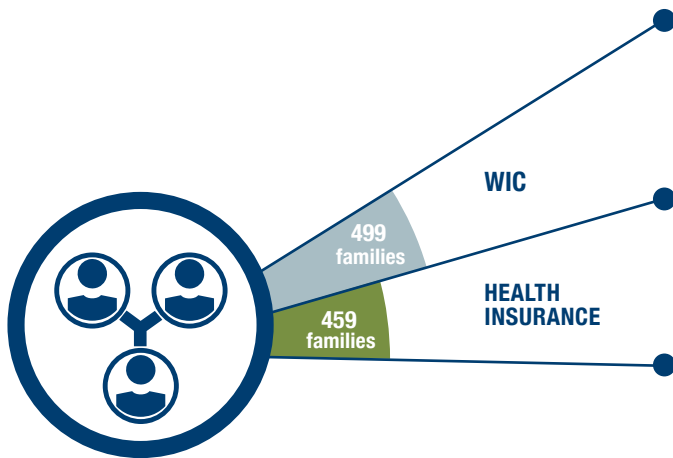
CONCRETE SUPPORT IN TIMES OF NEED

5,500

MEDI-CAL BIRTHS PER YEAR IN THE COUNTY

First 5 Alameda County (F5AC) Perinatal Hospital Outreach Coordinators, stationed at local hospitals & other community locations, referred families to home visiting/family support programs and other supports such as WIC & health insurance.

1,359 REFERRED TO OVER 10 HOME VISITING/FAMILY SUPPORT PROGRAMS (most of whom were Medi-Cal families)



PARENTAL RESILIENCE

Community grantees and home visitors screened parents / caregivers for depression.

630 SCREENED FOR DEPRESSION

156 (25%) SCREENED POSITIVE

164 WERE REFERRED / RECEIVED MENTAL HEALTH SERVICES

KNOWLEDGE OF PARENTING AND CHILD DEVELOPMENT

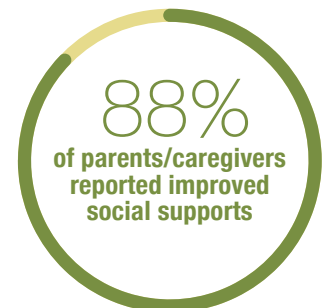
SOCIAL CONNECTIONS

OVER 3,000 PARENTS/CAREGIVERS

AND 1,300 CHILDREN

attended F5AC funded parent-child playgroups, parenting education, and Parent Cafes in 6 languages.

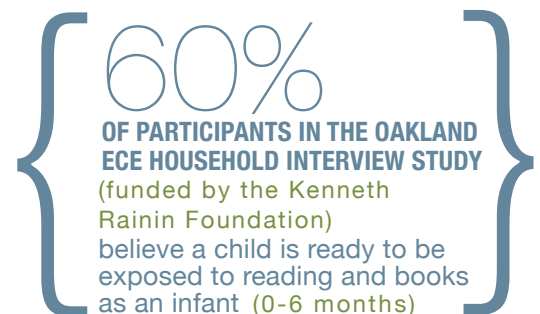
FAMILIES' PROTECTIVE FACTORS INCREASED



CHILDREN'S SOCIAL AND EMOTIONAL COMPETENCE

7,265 TALK, READ, SING TOTE BAGS

(with book, music cd, baby clothing and other items) were distributed in Oakland through over 40 organizations to support children's social-emotional development and early literacy.



2015 ALAMEDA COUNTY SCHOOL READINESS STUDY

1,530 kindergarteners at 47 public schools in 9 school districts were assessed for school readiness.

ONLY 44% WERE FULLY READY FOR SCHOOL



34% OF LATINO GIRLS **25% OF AFRICAN-AMERICAN AND LATINO BOYS**

The study found that a key predictor of readiness was participation in formal early education.

IMPLEMENTING QUALITY RATING AND IMPROVEMENT SYSTEMS (QRIS) IN ALAMEDA COUNTY

High quality early childhood education is particularly beneficial for low income children, helping to reduce gaps in readiness compared to more affluent peers. Children who attend more responsive, stimulating, and well-structured settings show greater academic achievements and fewer behavioral concerns by 3rd grade as compared to those who do not.

First 5 Alameda County funds an 18-month model of coaching and consultation services for ECE programs interested in quality improvement. After an initial assessment and rating of program quality, services are tailored to meet program needs and may include a focus on improving environments, business practices, developmental screening practices, child observations and/or teacher-child interactions.

6,812 PRIMARILY LOW INCOME CHILDREN

were enrolled in 128 participating QRIS sites; 70% of the county's state-subsidized programs and all but one of the Head Start agencies in Alameda County participate in the quality improvement effort.

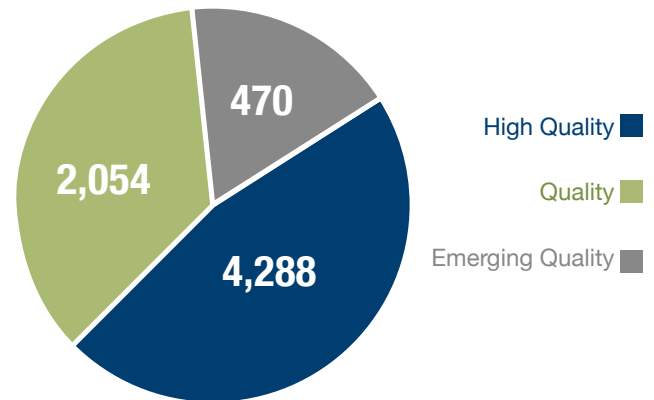
F5AC was able to bring in \$2.7 million dollars in state and federal funding for quality improvement and provider professional development.

After sites received 18 months of quality improvement support from QRIS,

42% OF CHILDREN IN EMERGING QUALITY SITES

at the beginning of the period were in sites that had improved to QUALITY at their next rating.

Number of children enrolled by site quality

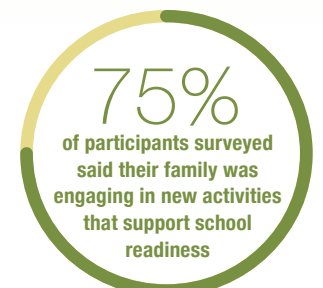
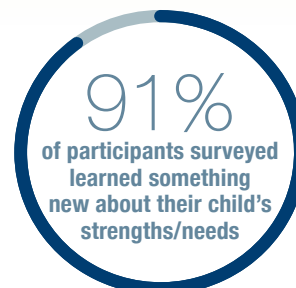


33%

OF CHILDREN AGES 3-5 IN ALAMEDA COUNTY ARE NOT ENROLLED IN PRESCHOOL OR KINDERGARTEN

F5AC funded quality early learning experiences for families whose children are not enrolled in licensed child care through neighborhood-based libraries and recreation centers in Oakland, San Leandro, Hayward, Union City and Livermore. F5AC has also supported the development of an early childhood "hub" at Room to Bloom in East Oakland, where community playdates were held monthly and a developmental playgroup was begun to support children's self-regulation.

OVER 500 CHILDREN AND THEIR FAMILIES SERVED



RESULT 3 CHILDREN REACH THEIR OPTIMAL DEVELOPMENTAL OUTCOMES

45% (LESS THAN HALF) OF CHILDREN IN ALAMEDA COUNTY WITH SPECIAL NEEDS are identified before kindergarten. Readiness assessments reveal that many children arrive at kindergarten with undetected concerns, missing the opportunity for early intervention.

INCREASING NUMBERS OF CHILDREN ARE BEING SCREENED, IDENTIFIED WITH ANY CONCERNS AND LINKED TO SUPPORTS

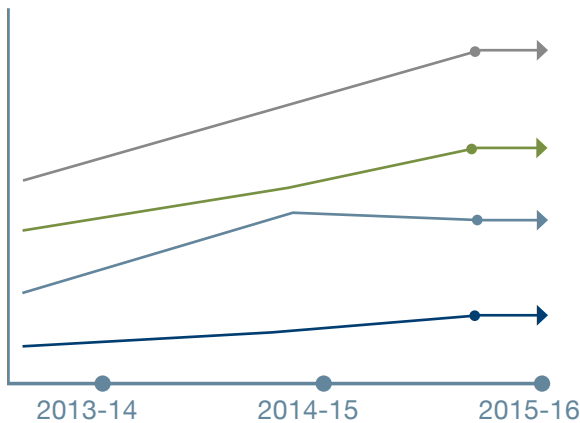
10,334 DEVELOPMENTAL SCREENINGS WERE CONDUCTED

using primarily the Ages and Stages Questionnaires (ASQ) —an increase of 1,400 over last year. 8,303 of the screenings were conducted by pediatric sites, compared to 7,051 last year.

ADVOCACY TO SUPPORT DEVELOPMENTAL SCREENING THROUGH MEDI-CAL MANAGED CARE

Along with the First 5 Association and several other First 5 counties, F5AC funded a study by Health Management Associates to develop policy recommendations and a “roadmap” so that managed care organizations can advocate for increased developmental screening among their members.

REFERRALS TO THE HELP ME GROW PHONE LINE HAVE GROWN OVER TIME, WITH PEDIATRIC PROGRAMS CONTINUING TO CONTRIBUTE THE GREATEST PROPORTION.



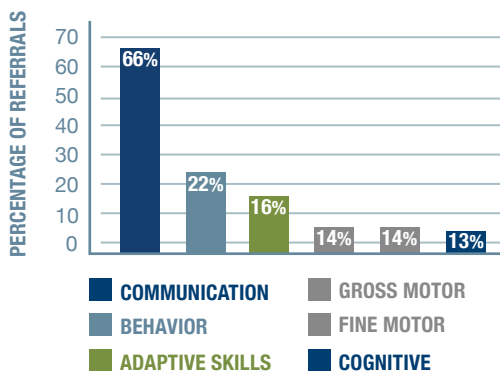
PEDIATRICS There was a 30% increase in the number of referrals to Help Me Grow from pediatric practices since 2012, likely due to the addition of 15 new pediatric practices now screening

PARENTS The number of parents who called Help Me Grow has doubled since 2012

DSP There are five times as many referrals to Help Me Grow from the Developmental Screening Program, which provides online access to the ASQ, since 2012

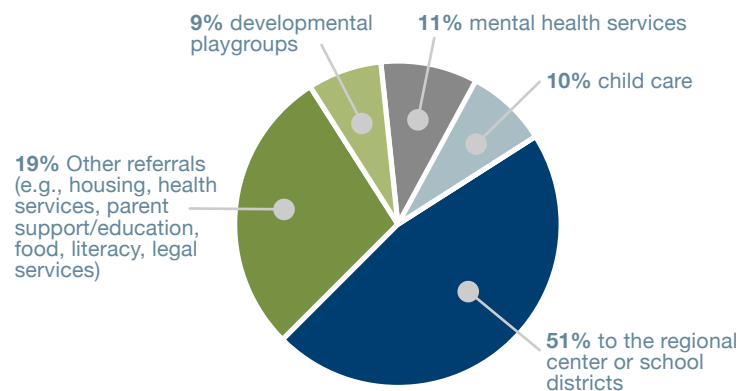
WIC There are four times as many referrals from WIC, with an 84% increase in referrals from one site

TOP 6 DEVELOPMENTAL CONCERNS OF CHILDREN REFERRED TO THE HELP ME GROW PHONE LINE



2,019 REFERRALS MADE BY HELP ME GROW FOR 1,313 CHILDREN

71% of these children were linked to at least one of the following services





SUPPORTING PARENT INVOLVEMENT AND ADVOCACY

With support from F5AC and the Interagency Children’s Policy Council, the Alameda County Early Childhood Policy Committee and Parent Voices Oakland brought together over 50 parents for the Spring Parent Forum, which led to the launch of a campaign to increase access to child care subsidies for displaced and/or homeless families. The County Board of Supervisors has been exploring funding options with the parents.



SUPPORTING FATHER ENGAGEMENT

The Alameda County Fathers Corps created an agency self-assessment tool that organizations can use to track their use of father-friendly principles. It also provided 8 policy and programmatic recommendations to the Board of Supervisors and public system department heads. Among the recommendations were:

- ▶ Train family service providers on how to engage fathers and father figures in a father-friendly manner that welcomes full participation, and increase the number of male staff within family service organizations at all strategic levels
- ▶ Ensure family service program models funded by and contracted out with County funds include a fatherhood component and are effectively engaging and supporting the needs of fathers/father-figures



TRAINING AND CAPACITY BUILDING FOR PROVIDERS

1,429 CEUS AWARDED THIS YEAR,
a 34% increase since 2012-13, the first
year of our strategic plan.

2,217 unduplicated providers received 21,358 hours of training.
89% of attendees felt learning objectives were met. 96% rated train-
ings as “very good” or “excellent,” up from 93% last year.



INCREASING ACCESS TO PRESCHOOL THROUGH THE AB833 ECE SUBSIDY PLAN

F5AC was one of several funders of research conducted on how to modify the way ECE subsidy dollars are utilized and distributed in the county. This work contributed to the development of the AB833 Early Care and Education Subsidy Implementation Plan, which was recently approved. This means that in Alameda County, starting in October 2016:

- ▶ Families can earn 30% more and still receive financial assistance for early care and education (ECE)
- ▶ Children can participate in state preschool when they are 2 years 9 months instead of three years old
- ▶ Families can remain eligible for ECE services up to 24 months, significantly reducing paperwork for families and programs
- ▶ Programs receive a 6-7% increase in their per-child reimbursement rate



EXPANDING COLLABORATION AND COORDINATION IN EAST OAKLAND

- ▶ The Room to Bloom prenatal to 8 collaborative in Castlemont consists of over 18 organizations and agencies developing a collaborative and coordinated system of services and supports easily accessed by families who need them.
- ▶ A first-ever Kindergarten/TK transition event was held at Oakland Unified’s New Highland and Rise Academy, bringing together 18 prospective families, CDC staff and kindergarten and TK teachers. This is a first step toward creating a stronger Pre-K to K bridge program in the district.



HELPING TO COORDINATE AND IMPLEMENT THE OAKLAND STARTING SMART AND STRONG INITIATIVE

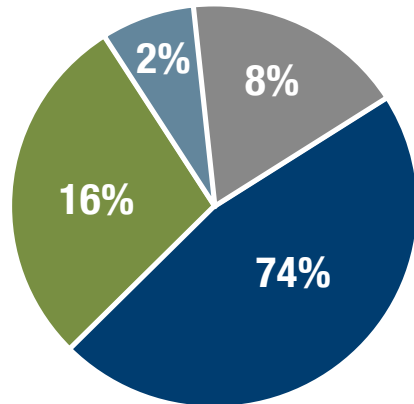
Oakland is one of three communities in California participating in the Lucille Packard Foundation’s 10 –year effort to support kindergarten readiness and 3rd grade success. F5AC serves on the Lead Planning team for the Oakland Starting Smart and Strong Initiative. Some of the efforts that F5AC is contributing to include:

- ▶ Conducting QRIS ratings in OUSD and other Oakland ECE sites to establish baseline quality measures, inform quality improvement, and ensure that these sites can pull down state quality rewards
- ▶ Developing School Readiness Hubs in Oakland
- ▶ Infusing Talk, Read, Sing, and Play strategies into common community gathering places and service access points, so parents and caregivers can access early literacy information and activities
- ▶ Providing consultation on conducting developmental screening at selected OUSD preschool sites and supporting systems development to scale implementation

FINANCIAL REPORT

AVAILABLE FUNDS

July 1, 2015 - June 30, 2016



- **Prop 10 Tax Revenue \$13,188,941**
- **Grants + Partnership Funding \$4,449,349**
- **Sustainability Fund \$434,139**
- **Other* \$881,109**

* Funding from Investments (\$697,127)
& Miscellaneous Revenue (\$183,982)

EXPENDITURES

| | |
|----------------------------------|---------------------|
| Home Visiting + Family Support | \$3,595,536 |
| Healthy Child Development | \$2,524,407 |
| Quality ECE | \$5,112,859 |
| School Readiness | \$414,303 |
| Place-Based Initiatives | \$453,732 |
| Grants for Community Support | \$1,993,125 |
| Training | \$435,934 |
| Eval/Tech | \$1,832,956 |
| Policy, Advocacy & Communication | \$1,419,284 |
| Administration | \$1,605,542 |
| Total Expenditures | \$19,387,677 |

OUR FUNDERS

- Alameda County Behavioral Health Care Services
- Alameda County Board of Supervisors -Supervisor Carson
- Alameda County Board of Supervisors -Supervisor Miley
- Alameda County Board of Supervisors -Supervisor Valle
- Alameda County General Services Agency – Early Care and Education Planning Council
- Alameda County Health Care Services Agency
- Alameda County Interagency Children’s Policy Council
- Alameda County Office of Education
- Alameda County Public Health Department
- Alameda County Social Services Agency
- Bay Area Council Foundation
- California Department of Education
- The California Wellness Foundation
- The Center for the Study of Social Policy
- First 5 California
- First 5 Contra Costa
- The Koshland Foundation
- NORC, University of Chicago (Substance Abuse and Mental Health Services Administration: Project LAUNCH)
- Oakland Education Fund
- The David and Lucile Packard Foundation
- Thomas J. Long Foundation (First 5 Association is fiscal agent)

EVALUATION REPORTS COMPLETED IN 2015-16

- Touchpoints Training Evaluation
- Results of the 2015 Fall School Readiness Assessment in Alameda County Comprehensive Report
- Alamedakids.org: Parent Survey and Focus Group Results
- Annual Overview of Alameda County Fathers Corps
- Promoting Early Identification in Alameda County WIC Offices
- First 5 Alameda County QRIS Evaluation

First 5 Alameda County
1115 Atlantic Ave
Alameda CA. 94501
Phone: 510.227.6900
Fax: 510.227.6901